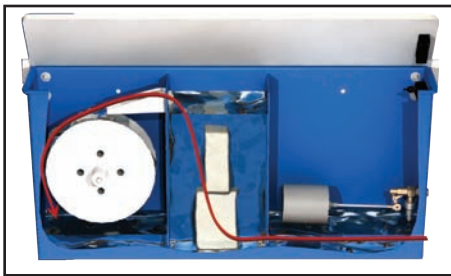


adjustment wheel



water control box



One Section

Modular 4.5 ft (1.4M) sections

BAADER 1397 Carcass Care® In-Line Stunner

- Modular design - from 4.5 ft in length to any multiple of 4.5ft for varied dwell times
- Narrow tank eliminates fly-up of birds
- Shorter tank height provides easy access for cleaning or removing shock plates
- Water depth - 6 to 10 mm deep to eliminate drowned birds and greatly decreases the amount of water loss at exit end without sacrificing performance
- Two adjustment wheels on each end to control water level of the tank or adjust for height of flock variances
- Sanitary stainless steel frame designed to be floor mounted or suspended from overhead conveyor track
- Adjustable guide bar covers the full length of the Stunner to ensure a good ground with the shackles
- Additional safety devices eliminate shock hazard and automatically shut the machine off



BAADER 1397 IN-LINE STUNNER

• Technical Data

Operating Range: 3 lbs. (1.4 kg) to 10 lbs. (4.5 kg)

Note: The indicated limits of the working ranges may vary as a function of the proportion, quality and nutritional condition of the bird. In order to achieve an optimal result, the machine should be adjusted within its working range to the bird size principally processed.

Capacity: Unlimited

Weights, Dimensions and Volume

Shipping Dims:	L	varies	
	W	30"	.77 m
	H	96"	2.44 m
Shipping Volume:		600 lbs.	272 kg
		<i>(dependent upon length)</i>	

Water

Process Water Reqs:	V	2 GPM	8 L/min
	P	40 PSI	3 bar
	T	60° F	16° C
Process Water Connection:		1/2" FNPT	1/2" FNPT

Electrical

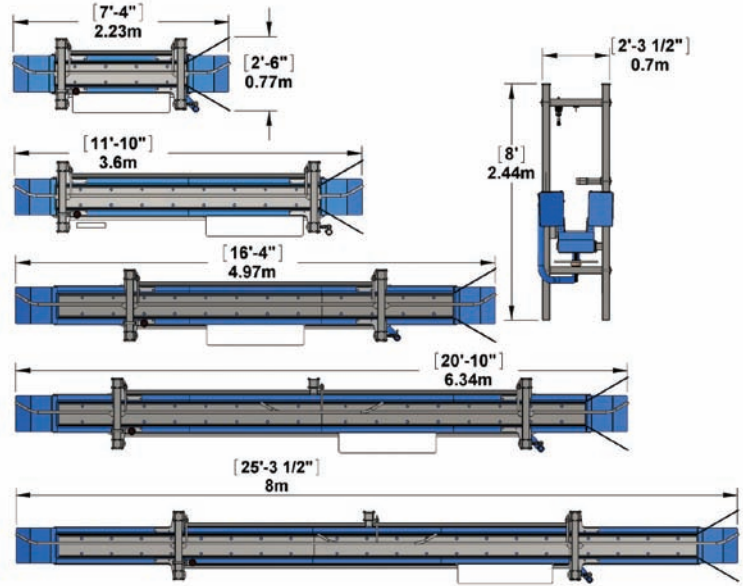
Std. Elect. Requirements:	V	120 V	120 V
	Ph	1 Ph	1 Ph
	Hz	60 Hz	50 Hz
	Amp	20 A	20 A

Note: All others subject to approval by Baader-Johnson

Illustrations and dimensions are approximate and not binding. Subject to design changes in the interest of technical progress. Actual scope of supply is specified in our quotations and order confirmations and may differ from descriptions and photos in this leaflet.

Attention!

For the illustration of technical details the safety devices and protection mechanisms are partly not shown in operative condition. When operating the machine, all corresponding devices and instructions referring to the safety of the machine must be utilized and/or observed. (Protective



Illustrations and dimensions are approximate and not binding. Subject to design changes in the interest of technical progress. Actual scope of supply is specified in our quotations and order confirmations and may differ from descriptions and photos in this leaflet.

Attention!

For the illustration of technical details the safety devices and protection mechanisms are partly not shown in operative condition. When operating the machine, all corresponding devices and instructions referring to the safety of the machine must be utilized and/or observed. (Protective panels and safety guards removed for photograph.)



Member of the BAADER Group
 2955 Fairfax Trafficway Kansas City, KS 66115
 Tel: 913-621-3366 Fax: 913-621-1729
 Email: sales@baader-johnson.com
 Web Site: www.baader-johnson.com
 800-288-3434 U.S. & Canada